

# Proposed new High School in Didsbury for the Laurus Trust



## Introduction



### Message from the Head

I am thrilled to be appointed as Head of Didsbury High School by the Laurus Trust. As a local resident I understand the educational needs of Didsbury. My family has lived here for generations and we have always been active members of the community. When the opportunity arose to be involved in establishing an outstanding non-selective academic secondary school in Didsbury it was too good to miss.

Before joining the outstanding team at Cheadle Hulme High School, I taught mathematics in schools in Manchester for over a decade. As a Deputy Headteacher and Specialist Leader of Education at Cheadle Hulme High School I am well aware of the qualities, attitudes and habits necessary to be successful academically. We want every student, regardless of background or circumstance, to be inspired and to thrive in all environments. For this to happen, it is imperative that they recognise what it takes to succeed, set aspirational goals and then work hard to achieve them. This is the reason for founding Didsbury High School.

I am determined that Didsbury High School will be a place for all to learn. Learning involves dedication and a drive to succeed; there are no shortcuts to success. Every student is welcome, provided they commit to working hard and giving their best every day. At Didsbury High School academic performance is a central tenet to our goals. We will offer a broad and enriching co-curricular offer, delivered via the Electives Programme, but the main business of the day is staff and students working hard. We are Didsbury, we are unashamedly academic.

*Thank you all for attending this event, your support for the proposal would be greatly appreciated.*

**Dr David Woolley**  
Head of School  
Didsbury High School



### Timeline:

Initial development of proposals	Summer / Autumn 2017
Local Engagement Sessions	23rd & 30th November 2017
Submit planning application	15th December 2017
Planning Committee meeting	8th March 2018
Start of construction	8th May 2018
School opens	September 2019

Welcome to your new school

### Next Steps

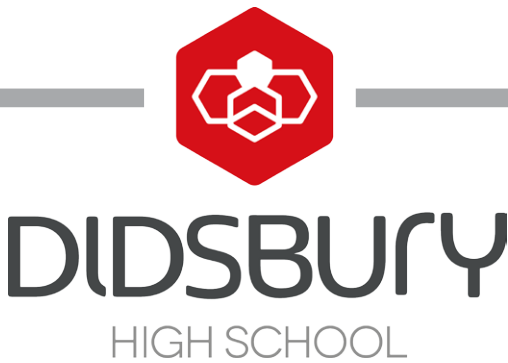
Following these public consultations, it is intended that a Planning Application will be submitted to Manchester City Council Planning Department on or before 15th December 2017. The Local Planning Authority will then provide an opportunity for members of the public to comment on the final proposals.

We welcome your comments on the new school proposals. Comments can be made by completing the feedback form here in person or via our online survey. The web address to view the boards and complete the survey online are provided on the feedback form.

Alternatively, you can email or post your comments to: [simon.peake@wyg.com](mailto:simon.peake@wyg.com)

WYG  
Quay West at Media City UK  
Manchester  
M17 1HH

Please aim to have your comments back to us by Wednesday 6th December 2017.





# Proposed new High School in Didsbury for the Laurus Trust



## Why do we need this school in Didsbury?



- Manchester's population is continuing to grow at a rate that makes it the fastest growing city in the UK.
- Larger primary school intakes are beginning to feed through to secondary schools. Didsbury's primary schools have increased their intake by 210 places to meet need.
- There have been significant recent housing developments locally, for example Didsbury Point and the former Withington Hospital land on Nell Lane, with further housing developments underway (at the Siemens site and on Cavendish Road). This has given rise to new demand for school places in West Didsbury that is best met locally.
- In September 2017, 5,988 children were offered a Year 7 place in a Manchester secondary school. Projections for September 2019 suggest 7,151 children will require a Year 7 place. There is not sufficient capacity in existing schools.
- Ensuring residents have access to high quality schools within their local area is central to Manchester City Council's 2016 "Our Manchester" strategy.
- The Council's capital funding to expand existing schools, referred to as Basic Need Funding, is limited. Therefore new free schools need to be built, funded directly by the Department for Education, and operated by approved providers such as the Laurus Trust.
- The Laurus Trust has liaised closely with the Council's education team who are supportive of this proposed new school

Source: Manchester City Council, School Place Planning & Admissions Report, 5 September 2017



Achievements of the sister school, Cheadle Hulme High School



## Admissions

Didsbury High School will not have a catchment area. If a tie break is required to determine which children get a place then those living closest\* will have priority. This is consistent with the Council's admission rules.

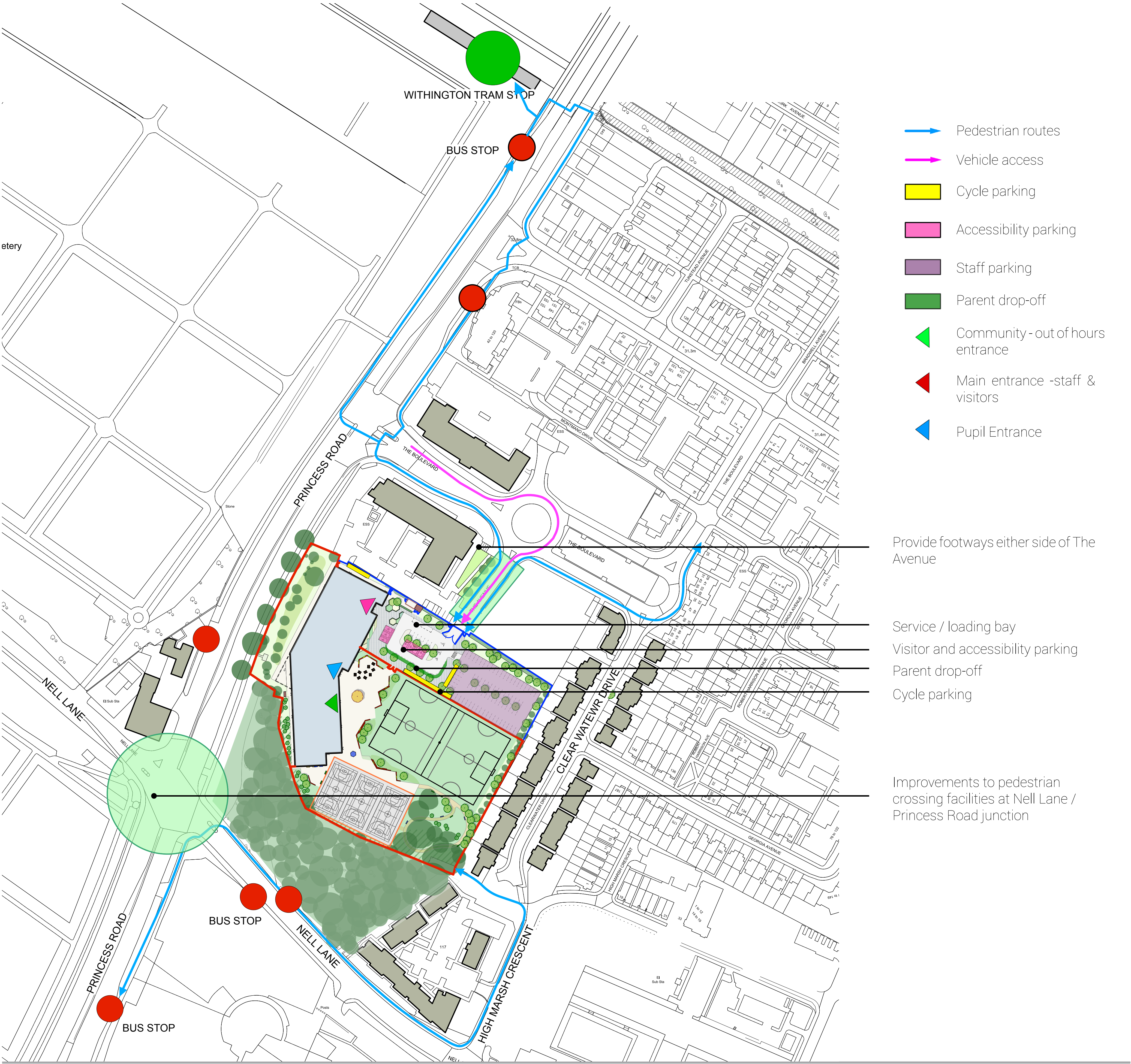
\*Straight line between the school address and the respective home address



# Proposed new High School in Didsbury for the Laurus Trust



## Movement & Access / Highways Improvements



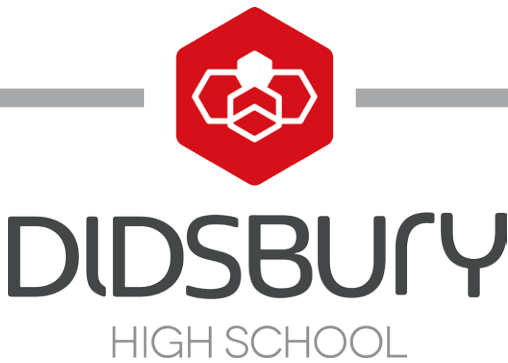
On site, the level of parking provision is determined by Manchester City Council and it is proposed to maximise the number of spaces within that policy (around 90 spaces). Cycle parking will also be provided in accordance with Council guidance. Space within the site to allow for pupil drop-off and pick-up is also proposed.

Traffic surveys at certain locations on the local road network have been carried out which will inform the assessment process that is part of the planning application process. A travel plan including measures to encourage staff and students to use modes of transport other than private cars is also being prepared.

The School will encourage sustainable travel modes as the site is located close to the main bus routes and Withington Metrolink tram stop.

### The design proposals will include:

- New footways along The Avenue off The Boulevard.
- Improvement for pedestrian crossings at the Princess Road and Nell Lane junction.
- 144 space cycle parking provision for pupils and staff.
- 90 space car parking provision including 7 accessibility bays, 8 visitor bays and pupil drop-off facility.



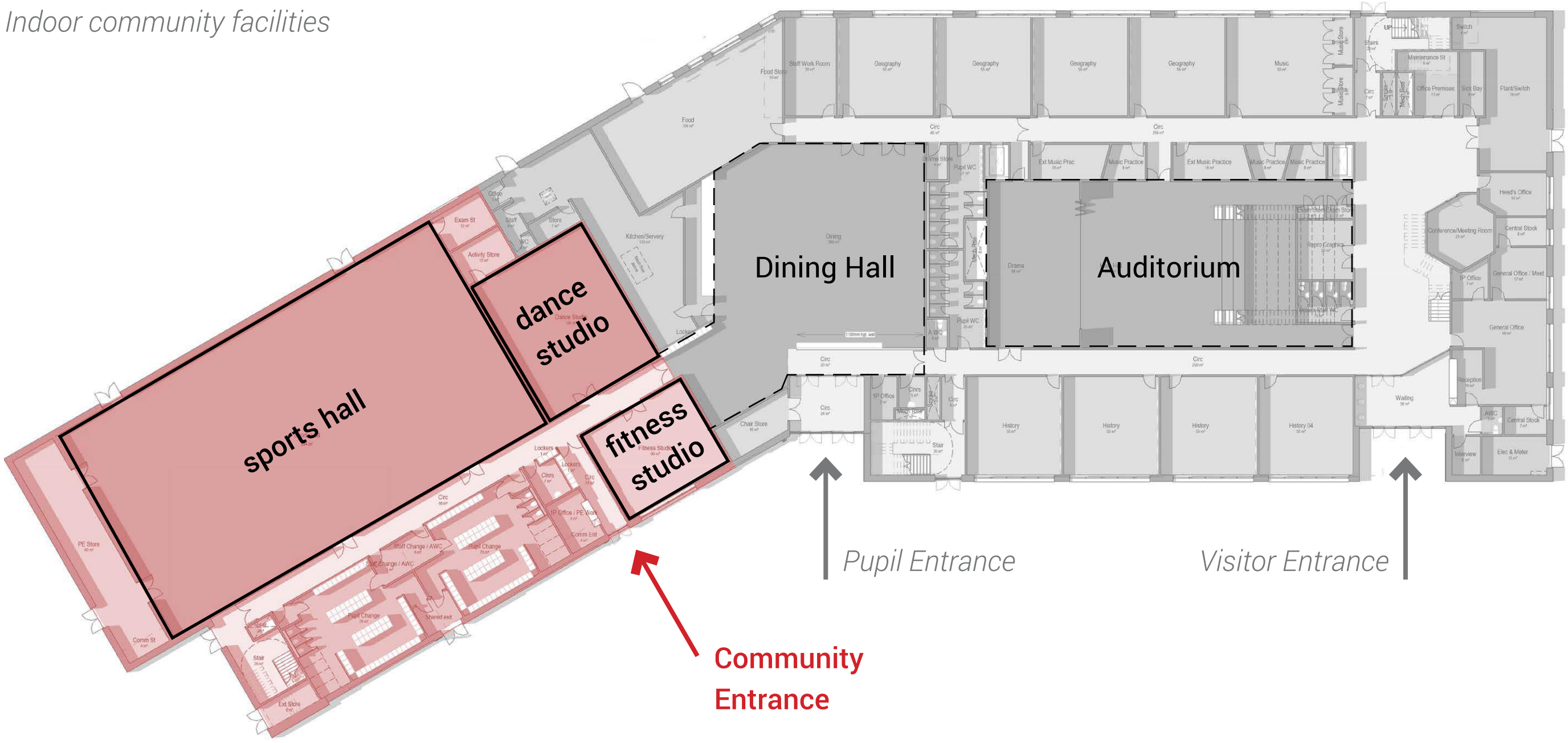


# Proposed new High School in Didsbury for the Laurus Trust



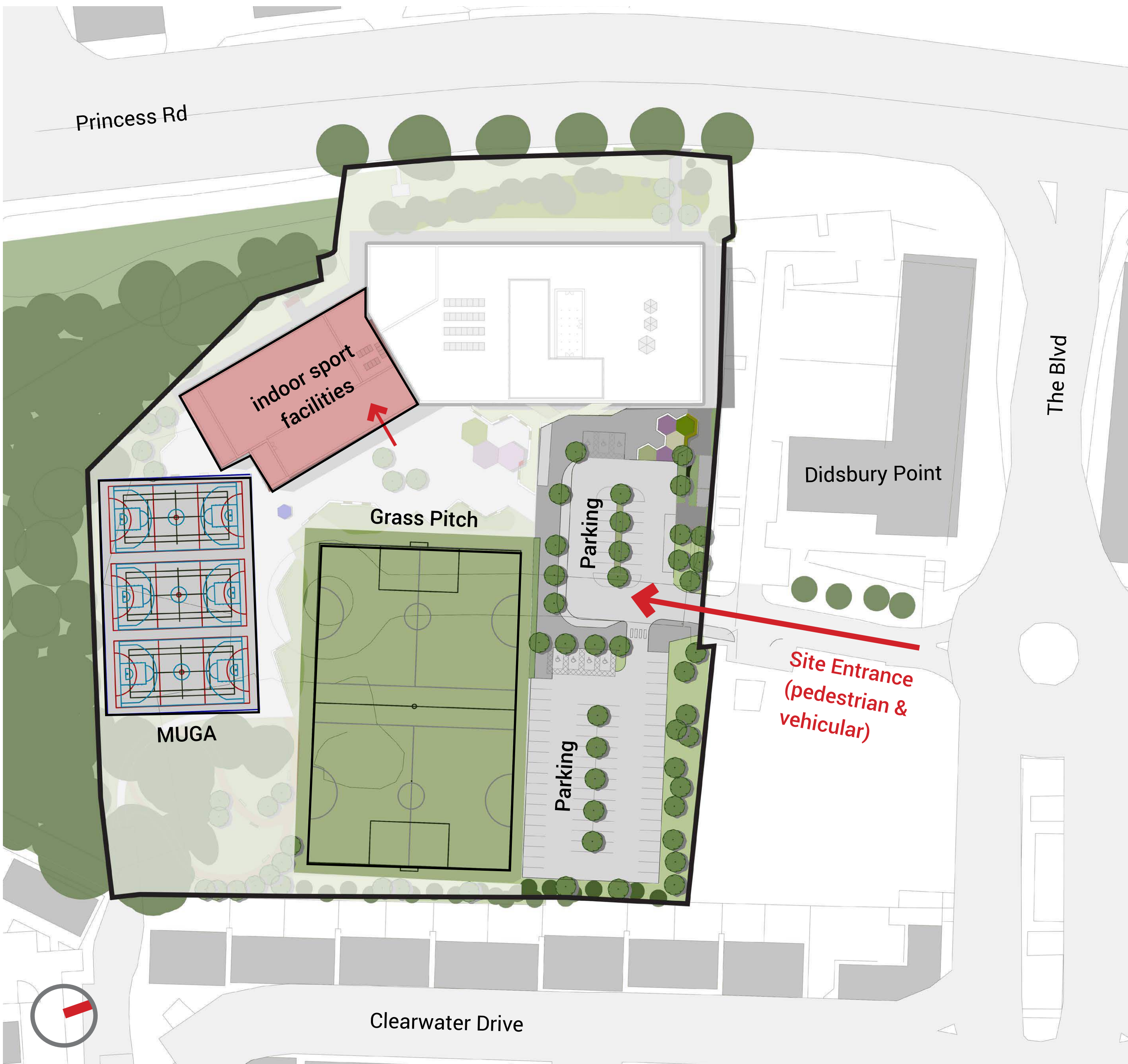
## Community Facilities

Indoor community facilities



These could include:

- Indoor community facilities: 10pm closure**
- Sports Hall accommodating:
- 4 badminton courts.
  - Additional markings for netball and basketball.
  - Space for table tennis, football and trampolines.
- Fitness Studio & Dance Studio
- Changing facilities
- Potential opportunities for Auditorium & Dining Hall use



Site Plan



Fitness Studio



4 Court Sports Hall



Aerial View



# Proposed new High School in Didsbury for the Laurus Trust



## Construction Delivery

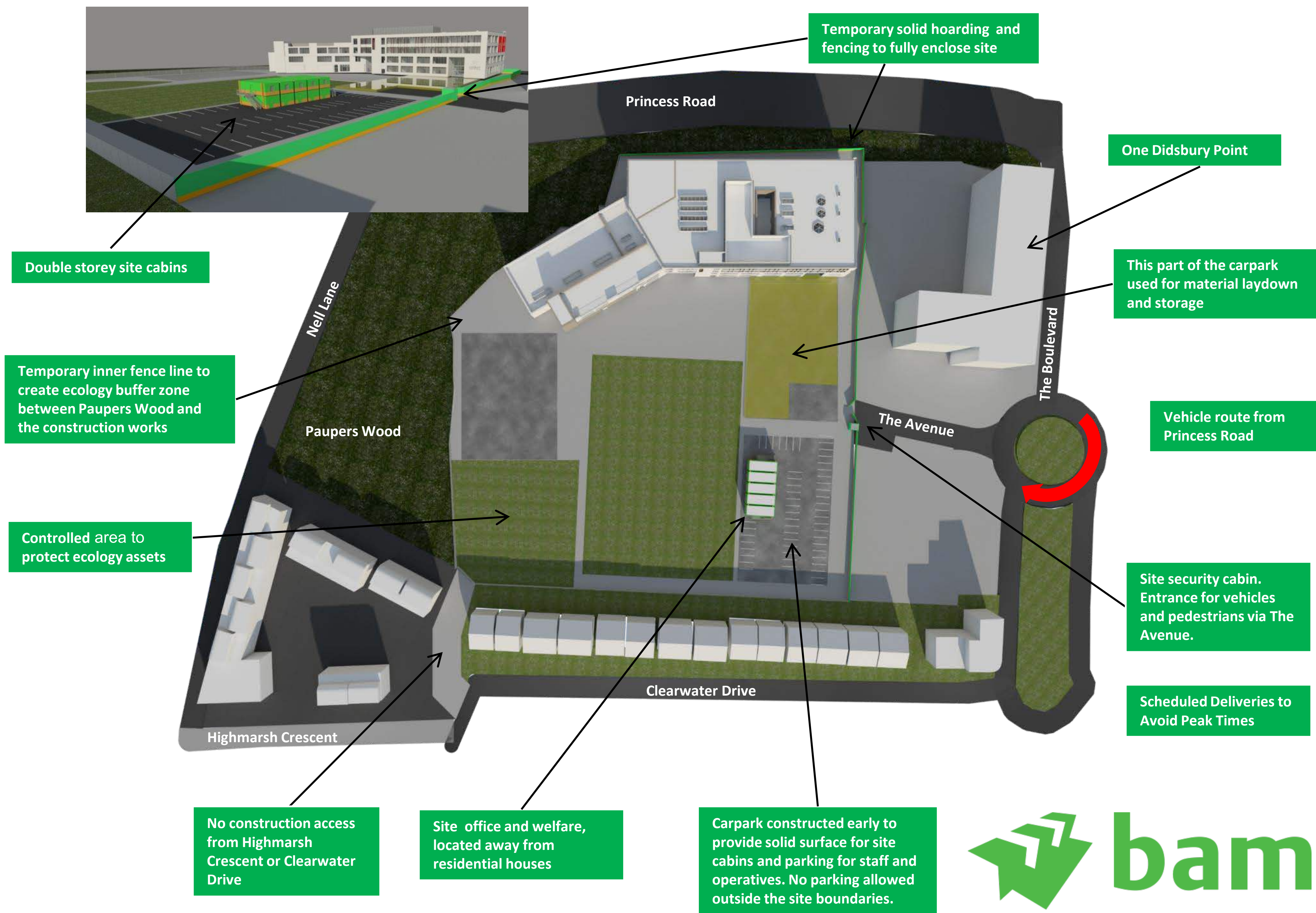
Construction Timeline:

Construction works commence	May 2018
Construction works complete	July 2019
New School opens	September 2019



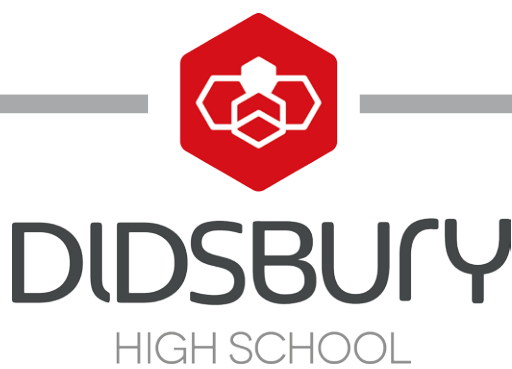
Considerate Constructors

Our Construction Partner, BAM, will register the project with the Considerate Constructors Scheme. This means BAM will be committed to being clean, safe, environmentally conscious, and respectful to the site neighbours during the construction stage, and will try to cause as little inconvenience as possible.



Key site logistics considerations:

- Considerate site working hours.
- Early completion of carpark and hardstanding for use as material laydown, site compound and parking.
- Site cabins located well away from residential houses.
- Site and compound lighting will consider neighbouring properties.
- Wheelwash for vehicles leaving site to avoid depositing mud on the surrounding roads.
- All construction related vehicles to park within the site boundaries, with no off-site parking allowed. Site personnel will be encouraged to car-share or use public transport.
- Scheduled deliveries to avoid peak times.
- Off-site vehicle hold point with deliveries called in by BAM Gateman, avoiding congestion around site entrance and minimising disruption to One Didsbury Point.
- Dust and noise mitigation measures.
- Regular communication with local residents through newsletters, social media and site open days.
- Open door policy for neighbours to meet with our Project Manager and raise any concerns.
- Regular litter pick around site boundaries by BAM operatives.
- Site registered with Considerate Constructors Scheme.





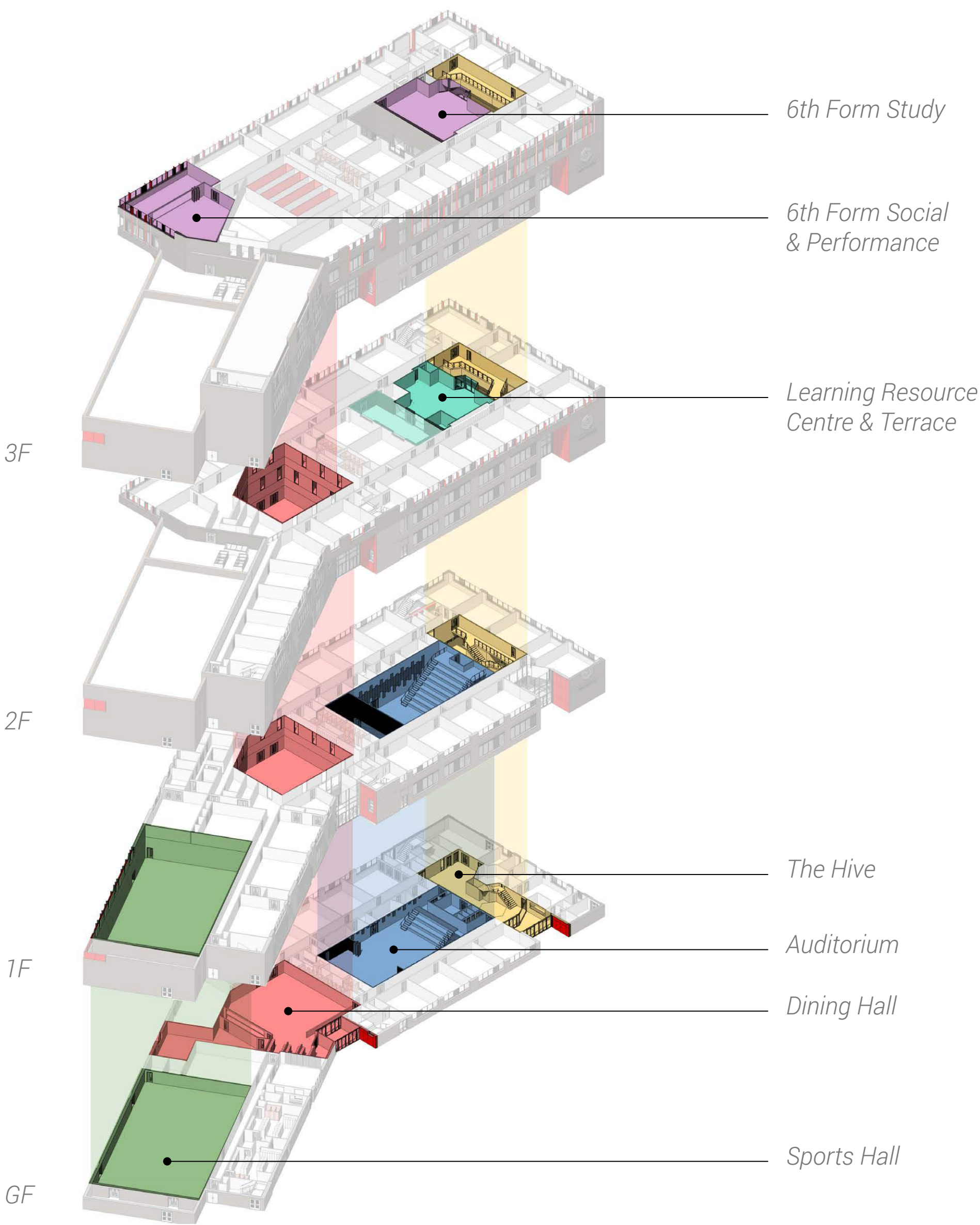
# Proposed new High School in Didsbury for the Laurus Trust



## Design Images



School entrance elevation



Plans



Aerial View - Princess Rd



Pupil Entrance



Key Spaces Section



# Proposed new High School in Didsbury for the Laurus Trust



## Landscape

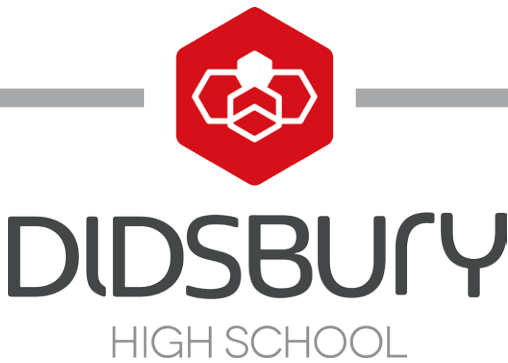
The landscape design creates a safe and stimulating environment for pupils, providing both social spaces and educational resources.

**The key features are:**

- Sports provision through a grass pitch, three court Multi Use Games Area (MUGA), and a jogging trail.
- A range of external social and recreation spaces, including a reflective meeting space amphitheatre and an external dining area.
- Retained mature trees and woodland to provide attractive ecological resource, enhanced through meadow grass planting, to create a calm ,shady and accessible social space.
- A dedicated year 7 play space.
- Secure fence lines between social spaces and vehicle / public areas.



Proposed Landscape Plan





# Proposed new High School in Didsbury for the Laurus Trust



## Ecology

Throughout the design process, it has been a principal aim to ensure that areas of sensitive ecological value are retained and enhanced through the new development where ever feasible. A detailed Ecological and Arboricultural Assessment has been undertaken in order to ascertain the ecological value of the site and identify any ecological receptors which may present constraints or opportunities to the overall design and to identify trees of value.

Additional surveys will be required to check for active badger setts and hedgehogs prior to works commencing on site and appropriate protection measures implemented.

### Laurus Trust Ecology Vision

A key aspect of the Laurus Trust's vision is to teach young people the importance of respecting and protecting the environment in which they live. As part of the Leadership and Service Cornerstone, students will have opportunities to develop their understanding of the local ecology and work within the community on sustainable projects. They will be encouraged to preserve and nurture the dedicated habitat area on the south east corner of the site as well as our rooftop bee hives.



Sketch view of proposed ecology area within school incorporating existing mature trees, new tree planting and managed woodland shrub and grasses.

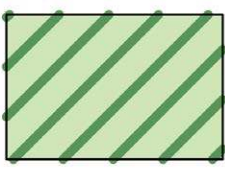
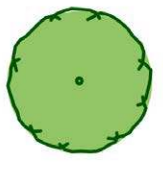
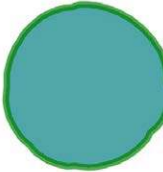



### Key aspects for the design proposals:

- Ecology Consultants, The Environment Partnership (TEP), are involved in all aspects of the design to ensure we maximise ecological benefit.
- Existing woodlands and trees to be retained where possible.
- Lighting design to minimise light spill into tree canopies and reduce disturbance to local bat activity.
- Significant amount of replacement tree planting, using native species.
- Significant shrub planting using berry bearing and nectar rich native species.
- Provision of ecology enhancements such as bat, bird and hedgehog boxes, and insect hotels.
- Minimise wastage through design.

### Key aspects for construction:

- Pre-start ecology checks by the appointed Ecology Consultant, TEP.
- Ground clearance and tree removal works scheduled to avoid nesting season (March to August), and done under TEP guidance.
- Temporary tree protection measures in place for the full duration of works – with regular compliance checks by TEP.
- Responsible removal of invasive species (mont bretia found on site)
- Sensitive temporary lighting measures to avoid disturbing wildlife.

-  Proposed area of native planting and woodland meadow grass combined with management of the existing shrub to maximise biodiversity
-  Proposed new tree planting
-  Existing trees to be retained
-  Trees to be removed